

Artificial Solutions

Making Technology Think

Why Implementing Natural Language in the Enterprise Is A Double-Edge Sword

Andy Peart, CMO, Artificial Solutions

April-20 2015

**Natural Language
technology will be as
critical to the business
enterprise of 2020 as
websites are today**

BYOD

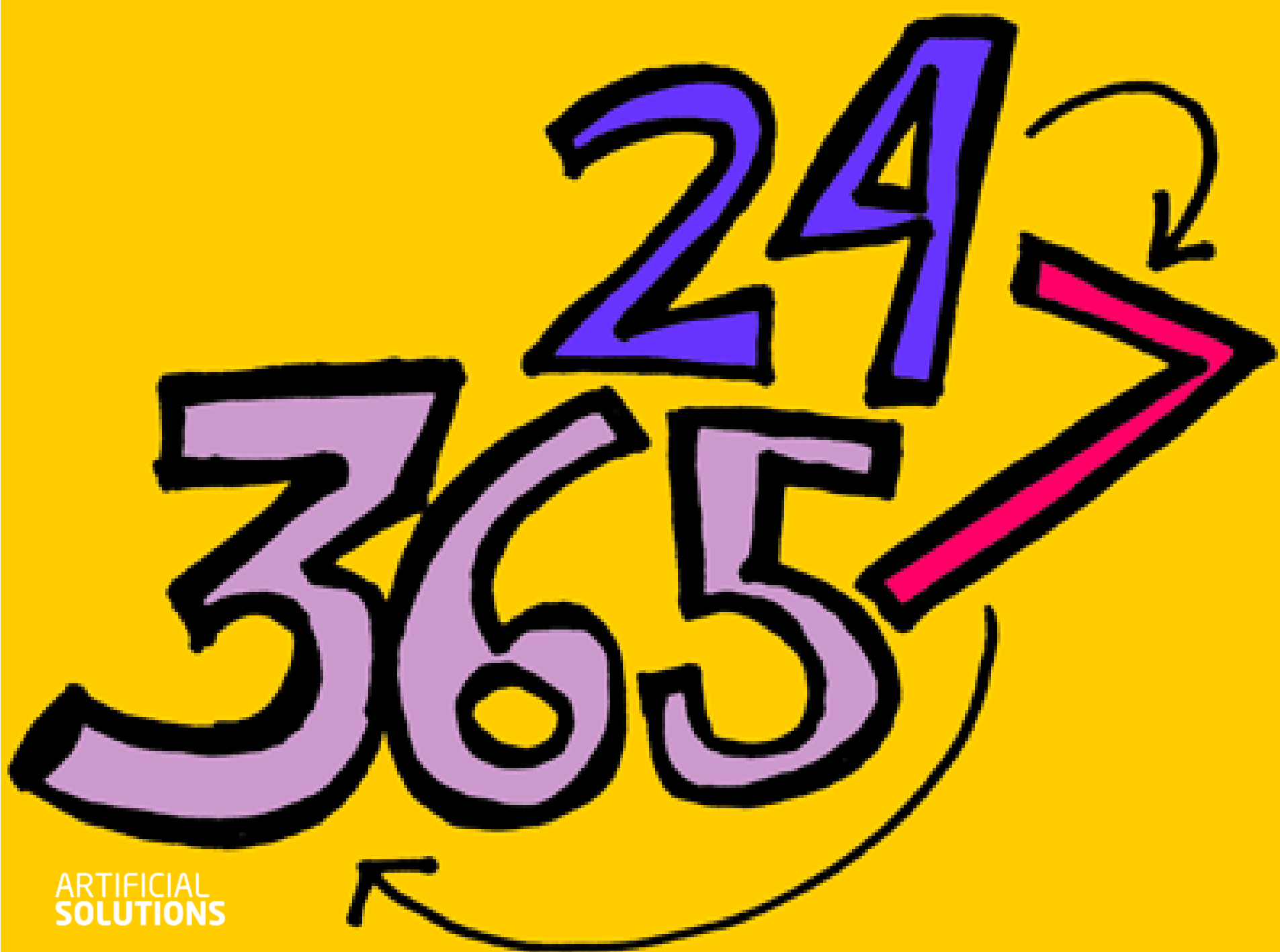


ARTIFICIAL
SOLUTIONS

The Rise of Natural Language Capabilities

**ARTIFICIAL
SOLUTIONS**

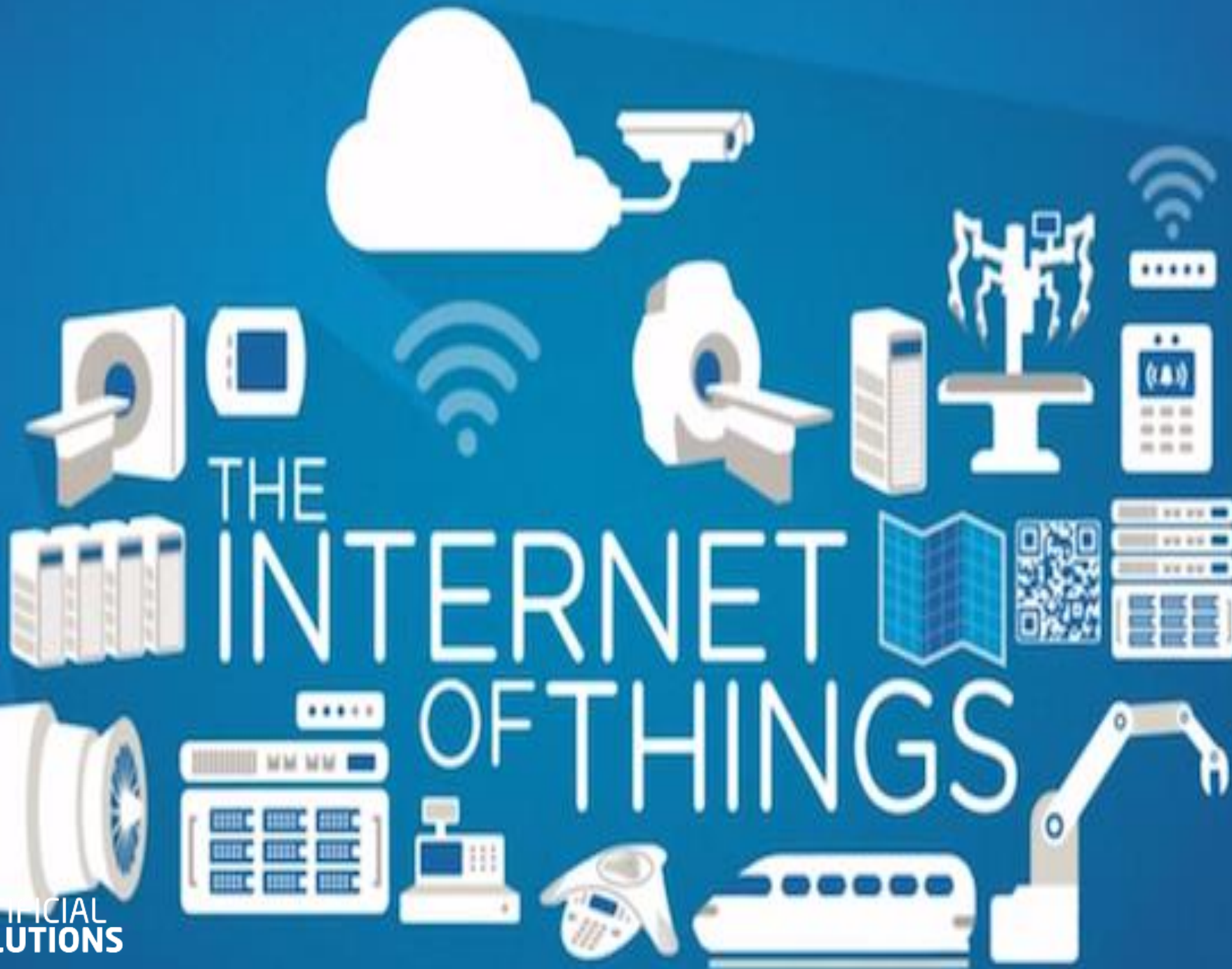
A stylized blue brain composed of glowing circuit lines and binary code (0s and 1s) on a dark background. The brain is formed by a complex network of white and blue lines, with many points of light. Binary digits are scattered throughout the image, particularly in the lower-left and lower-right areas.



ARTIFICIAL
SOLUTIONS

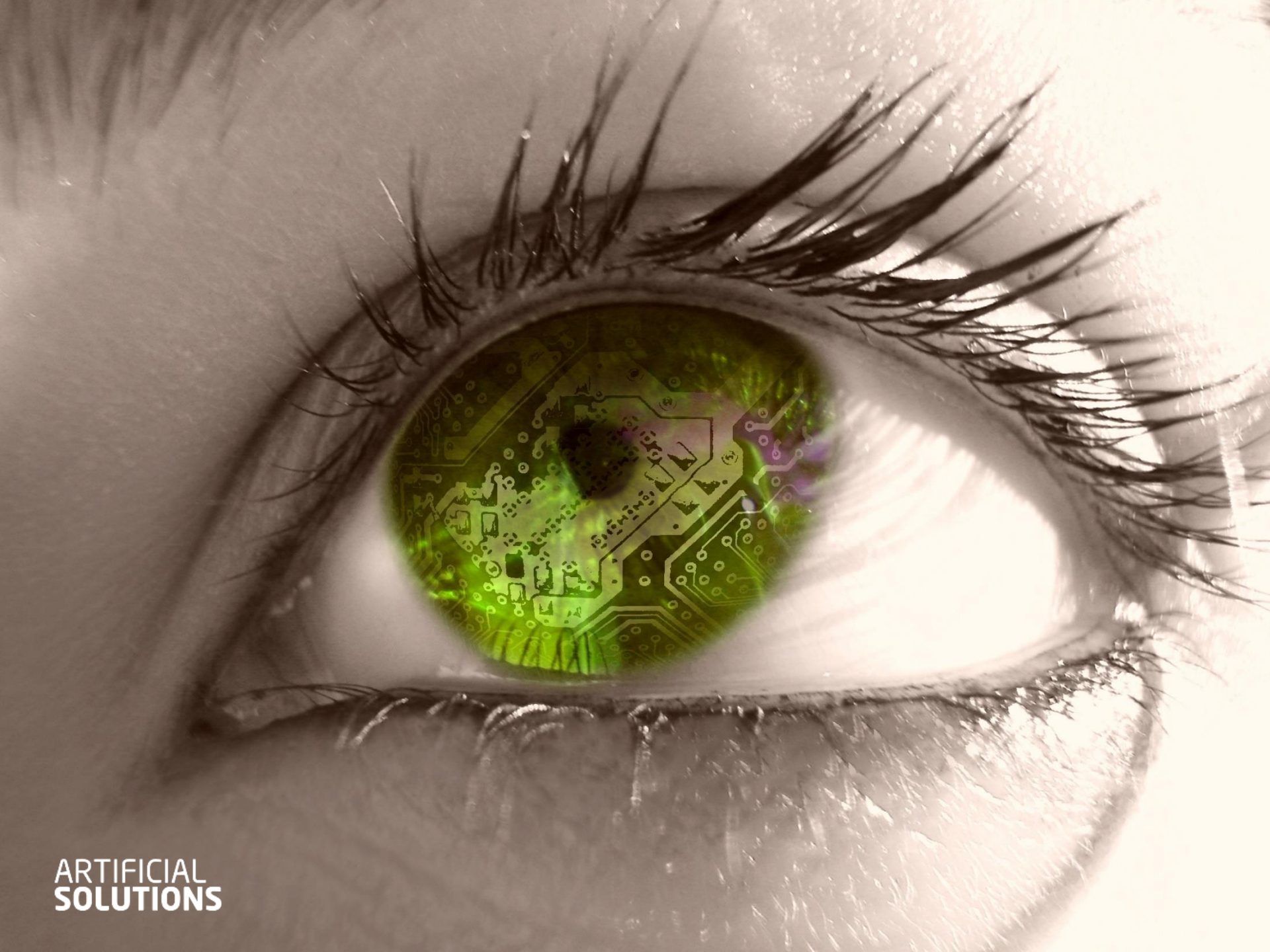
Sorry WE'RE
CLOSED

ARTIFICIAL
SOLUTIONS



THE INTERNET OF THINGS

ARTIFICIAL
SOLUTIONS

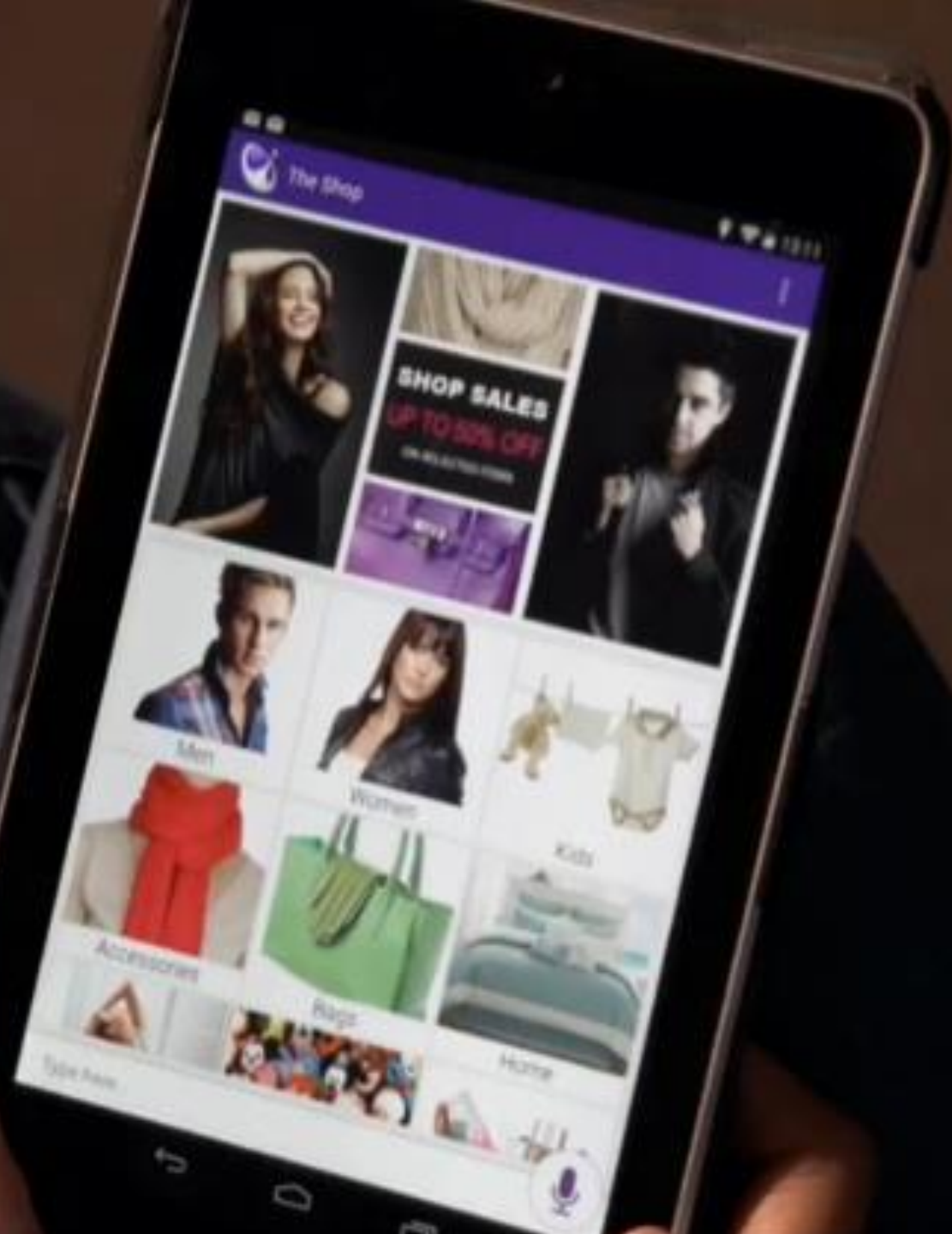


**ARTIFICIAL
SOLUTIONS**



**ARTIFICIAL
SOLUTIONS**

©Copyright Artificial Solutions 2015



ARTIFICIAL
SOLUTIONS

1. **Platform:** to create & maintain Natural Language applications
2. **Scalable:** Cloud-based to enable huge-scale deployments
3. **Integration:** ability to execute tasks in back office enterprise systems
4. **Multi-Lingual**
5. **Natural Language Understanding:** real-time implicit content and inform the next enhancements to the customer journey







ARTIFICIAL
SOLUTIONS

THANK YOU

GRACIAS
ARIGATO
SHUKURIA
JUSPAXAR
DANKSCHEEN
TASHAKKUR ATU
YAQHANYELAY
SUKSAMA
EKHMET
BIYAN
SHUKRIA
TINGKI
MAKE
GRAZIE
MEHRBANI
PALDIES
BOLZİN
MERCI
GOZAIMASHITA
EFCHARISTO
KOMAPSUMNIDA
CHALTU
NUHUN
SNACHALHUYA
SPASSIBO
WABEEJA
MAITEKA
HUI
YUSPAGARATAM
UNALCHEESH
SPASIBO
DENKAUJA
NEHACHALHYA
MIRSI
ATTO
ANIKHA
SAINCO
MERASTAWHY
GAEJTTHO
AGUYJE
FAKAAUE
LAH
MINMONCHAR
MAKETAI
SIKOMO
ENKOU
HATUR
GUI
BAIKHA
MEDAWAGSE
TAVTAPUCH

www.artificial-solutions.com

www.nlineews.com

Andy.peart@artificial-solutions.com

@AndyPeart